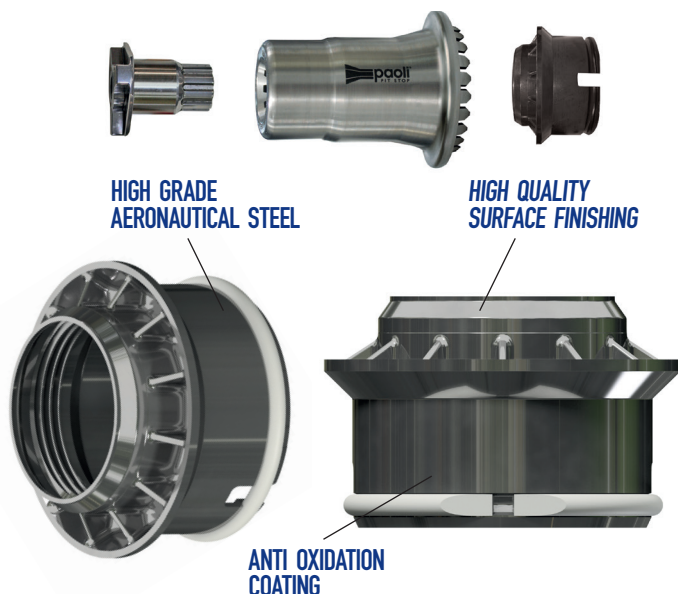


PAOLI WHEEL NUTS

Paoli is not only the go to for wheel guns: from the experience gained on the field and the internal engineering research, a new complete racing parts supply service is born. The R&D work of our highly qualified technicians, the cooperation with some of the most famous racing teams, and our 50 years long experience as wheel gun constructors make us experts in the field of forces applied to the **WHEEL NUTS** and in knowing how to manage them in order to improve **TOUGHNESS**, **DURABILITY** and **RELIABILITY** of the products. We look at the system of wheel gun, socket, nut, and wheel hub as a whole to be optimised together in order to achieve a **FAST** and **SAFE PIT STOP**.



IN STOCK

FERRARI

COMPATIBLE WITH F488/F296

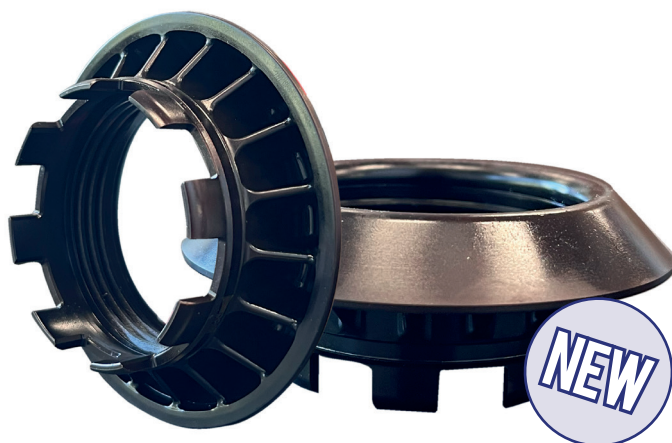
CODE	VERSION
B.32.0030	LH - 300M steel
B.32.0031	RH - 300M steel

COMPATIBLE WITH FERRARI CHALLENGE F488/F296 & FERRARI 599XX

CODE	VERSION
B.32.0046	LH - 7075 aluminium alloy
B.32.0047	RH - 7075 aluminium alloy



ON DEMAND WE ARE ABLE TO PRODUCE AND SUPPLY MORE WHEEL NUTS FOR DIFFERENT SPECIFIC NEEDS



COMPATIBLE WITH PORSCHE GT3

CODE

VERSION

B.32.0048

RH - 300M steel

COMPATIBLE WITH PORSCHE CUP

CODE

VERSION

B.32.0048

RH - 300M steel

B.32.0049

LH - 300M steel

DIFFERENT AVAILABLE VERSIONS :

COLOURS:



FINISHING:

- GLOSSY
- MATT

