

PAOLI SOCKETS

The new Paoli sockets are an unprecedented product and the result of a long and complex engineering research. The continuous consultation with many customers such as **ORECA**, **NASCAR** and many others has meant that the technological development of Paoli sockets went hand in hand with the real needs of the teams in terms of **VERSATILITY, SAFETY, MATERIALS** and **MAINTENANCE**.

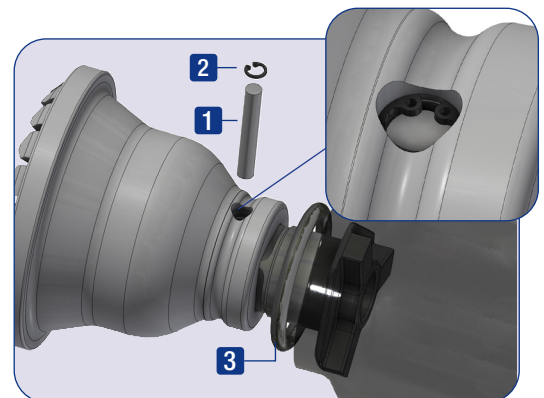
- Three different materials: titanium, special steel and aerospace aluminium. The first and the second are suitable for the race application, the third one is suitable for non-intensive use and torque wrench.
- Innovative design, attractive shapes and aesthetically pleasing.
- Accuracy in fitting the socket to the square drive, perfect clearance that allows the socket to be assembled and disassembled just by hand.
- Innovative safety system to insert the pin through the socket/square drive hole:
 - Unbalance of the center of the pin on the side of the blind hole
 - Elastic ring to prevent pin ejection
 - Cover O-ring

Maximum safety, assembly precision and reduced assembly times.

- Insertion of service holes for maintenance of magnets: replacing magnets is quick and easy, with a simple plug-locator.
- Internal 'O' ring retaining nut made from new Paoli Sockets material. The customized resin gives the socket an ideal grip with its high gripping power.
- The Paoli Sockets Service Kit for the maintenance and replacement of worn parts contains everything needed to work on the socket simply and safely. A brief instruction manual indicates the optimum way to carry out operations (E.g. replacement and subsequent refinement of magnets).

INTERNAL 'O' RING RETAINING NUT ESPECIALLY MADE FOR PAOLI SOCKETS.

REPLACING MAGNETS IS QUICK AND EASY THANKS TO REAR SERVICE HOLES.



INNOVATIVE SAFETY SYSTEM

- 1 Insert the locking pin in transverse hole of the wheel nut socket.
- 2 Place the elastic ring for bore in the seat formed in the hole where the locking pin was positioned, to prevent it from escaping.
- 3 Place the retaining O-ring in the housing on the collar of the wheel nut socket.

ALSO AVAILABLE IN AEROSPACE ALUMINIUM, SUITABLE FOR TORQUE WRENCH APPLICATIONS.

ACCURACY IN FITTING THE SOCKET TO THE WRENCH (MINIMAL CLEARANCE).

INNOVATIVE DESIGN, ATTRACTIVE SHAPES AND AESTHETICALLY PLEASING.

MANUAL



Operating and
Maintenance
Manual



WWW.PAOLI.NET | SALES@PAOLI.NET | +39.0522.364511



"GHOST MAGNETS" TECHNOLOGY

Designed for the **PORSCHE 992 GT3 R**, the wheel socket with "ghost magnets" technology features Paoli's patented Spline system and an innovative retention system for the center lock nuts.

The magnets are fully surrounded and protected during use. It's an advanced technology also used in wheel sockets **developed for NASCAR** and **BMW M4 GT3**.

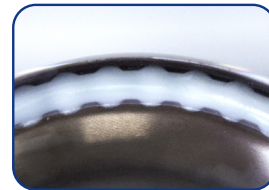


GHOST MAGNETS



VISIBLE MAGNETS

The magnets are **BUILT IN**, and fixed with a special resin that holds them firmly and permanently in place. Thanks to this system, there is no risk of the magnets coming loose, while at the same time the resin provides an extra layer of protection reducing the possibility of cracking.



SPECIAL RESIN

SPLINE DRIVE TECHNOLOGY

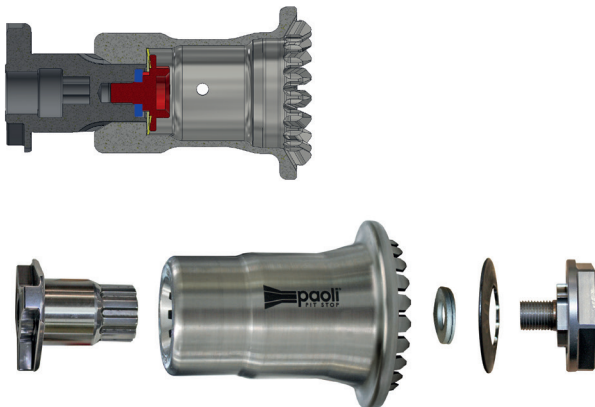
PATENTED PRODUCT

From **PAOLI'S EXPERIENCE** and its cutting edge sectorial engineering research a new technology is born: the **SPLINE DRIVE**. The work in R&D of the Paoli highly skilled technicians and the partnership with the most recognized racing teams has allowed the development of an innovative and greatly performing product. A spline drive wheel gun differs from a square drive tool mainly in the teeth that connect the anvil with the socket. This means the following advantages:

- More **EFFICIENT CONNECTION** than traditional square drive anvil thanks to the elimination of gap and vibrations
- More **DURABILITY** due to less wear
- More comfort and **SAFETY FOR THE OPERATOR** thanks to the removal of the pin

ANVIL-SOCKET FIXING SYSTEM!

The wheel nut socket is connected to the anvil by a cutting edge fixing screw system.



IN STOCK

FERRARI



F488/F296
BEST PRACTICE GT3 SERIES

CODE	B.28.0104
DRIVE	Paoli Spline
MATERIAL	300M steel
RETENTION SYSTEM	-
TEETH NUMBER	12



F488/F296
BEST PRACTICE GT3 SERIES

CODE	B.28.0106
DRIVE	1"
MATERIAL	300M steel
RETENTION SYSTEM	-
TEETH NUMBER	12

FERRARI



F488/F296
BEST PRACTICE GT3 SERIES

CODE	B.28.0107
DRIVE	1"
MATERIAL	Grade 5 titanium
RETENTION SYSTEM	-
TEETH NUMBER	12

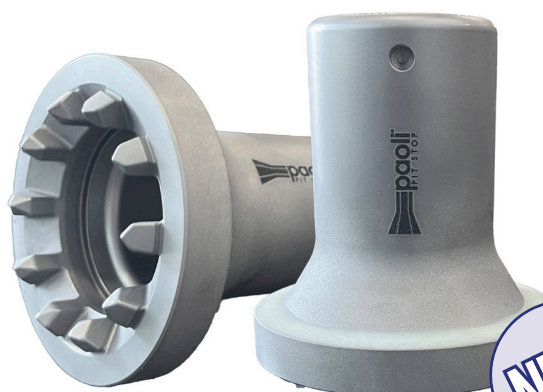


F488/F296
BEST PRACTICE GT3 SERIES

CODE	B.28.0090
DRIVE	Paoli Spline
MATERIAL	Grade 5 titanium
RETENTION SYSTEM	-
TEETH NUMBER	12

FERRARI**LAMBORGHINI** **AUDI****GHOST MAGNETS SOCKET****F488/F296****BEST PRACTICE** FERRARI CHALLENGE

CODE	B.28.0136
DRIVE	1"
MATERIAL	7075 aluminium alloy
RETENTION SYSTEM	circlip
TEETH NUMBER	20

**NEW****LAMBORGHINI
HURACAN/TEMERARIO/AUDI R8****BEST PRACTICE** GT3 SERIES

CODE	B.28.0162
DRIVE	Paoli Spline
MATERIAL	Grade 5 titanium
RETENTION SYSTEM	ghost magnets
TEETH NUMBER	10

LAMBORGHINI **AUDI****LAMBORGHINI
HURACAN/TEMERARIO/AUDI R8****BEST PRACTICE** GT3 SERIES

CODE	B.28.0081
DRIVE	Paoli Spline
MATERIAL	300M steel
RETENTION SYSTEM	magnets
TEETH NUMBER	10

**LAMBORGHINI
HURACAN/TEMERARIO/AUDI R8****BEST PRACTICE** GT3 SERIES

CODE	B.28.0050
DRIVE	1"
MATERIAL	300M steel
RETENTION SYSTEM	magnets
TEETH NUMBER	10



LAMBORGHINI HURACAN/TEMERARIO/AUDI R8

BEST PRACTICE GT3 SERIES

CODE	B.28.0108
DRIVE	Paoli Spline
MATERIAL	Grade 5 titanium
RETENTION SYSTEM	magnets
TEETH NUMBER	10

GHOST MAGNETS SOCKET



BMW M4 GT3

BEST PRACTICE GT3 SERIES

CODE	B.28.0153
DRIVE	1"
MATERIAL	300M steel
RETENTION SYSTEM	ghost magnets
TEETH NUMBER	12

GHOST MAGNETS SOCKET



BMW M4 GT3

BEST PRACTICE GT3 SERIES

CODE	B.28.0132
DRIVE	Paoli Spline
MATERIAL	Grade 5 titanium
RETENTION SYSTEM	ghost magnets
TEETH NUMBER	12



BMW M4 GT3

BEST PRACTICE GT3 SERIES

CODE	B.28.0131
DRIVE	1"
MATERIAL	Grade 5 titanium
RETENTION SYSTEM	ghost magnets
TEETH NUMBER	12

GHOST MAGNETS SOCKET



PORSCHE 991/992 GT3-R

BEST PRACTICE GT3 SERIES

CODE	B.28.0139
DRIVE	Paoli Spline
MATERIAL	Grade 5 titanium
RETENTION SYSTEM	ghost magnets
TEETH NUMBER	18



PORSCHE 991/992 GT3-R

BEST PRACTICE GT3 SERIES

CODE	B.28.0140
DRIVE	1"
MATERIAL	Grade 5 titanium
RETENTION SYSTEM	ghost magnets
TEETH NUMBER	18

GHOST MAGNETS SOCKET



ALUMINIUM SOCKET:
ONLY FOR TORQUE
WRENCH APPLICATION

PORSCHE 991/992 CUP

BEST PRACTICE PORSCHE CUP

CODE	B.28.0052
DRIVE	1"
MATERIAL	7075 aluminium alloy
RETENTION SYSTEM	O-ring
TEETH NUMBER	15



B.28.0157

B.28.0149

MCLAREN 720 GT3/GT3 EVO/GTX

BEST PRACTICE GT3 SERIES

CODE	B.28.0157	B.28.0149
DRIVE	1"	Paoli Spline
MATERIAL	Grade 5 titanium	Grade 5 titanium
RETENTION SYSTEM	ghost magnets	ghost magnets
TEETH NUMBER	10	10



MERCEDES AMG GT3

BEST PRACTICE GT3 SERIES

CODE	B.28.0133
DRIVE	1"
MATERIAL	Grade 5 titanium
RETENTION SYSTEM	-
TEETH NUMBER	12



MERCEDES AMG GT3

BEST PRACTICE GT3 SERIES

CODE	B.28.0137
DRIVE	Paoli Spline
MATERIAL	Grade 5 titanium
RETENTION SYSTEM	-
TEETH NUMBER	12



FORMULA E GEN 3

BEST PRACTICE FORMULA E GEN 3

CODE	B.28.0156
DRIVE	Paoli Spline
MATERIAL	Grade 5 titanium
RETENTION SYSTEM	circlip



FORMULA E GEN 4

BEST PRACTICE FORMULA E GEN 4

CODE	B.28.0142	B.28.0143
DRIVE	Paoli Spline	1"
MATERIAL	Grade 5 titanium	Grade 5 titanium
RETENTION SYSTEM	circlip and magnets	circlip and magnets
TEETH NUMBER	16	16

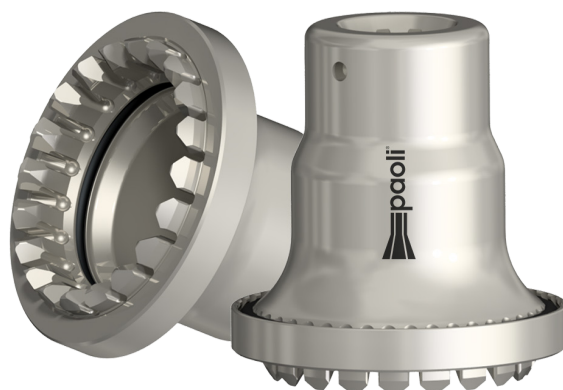
GHOST MAGNETS SOCKET



INDYCAR

BEST PRACTICE INDYCAR

CODE	B.28.0161
DRIVE	1"
MATERIAL	Grade 5 titanium
RETENTION SYSTEM	ghost magnets and o-ring
TEETH NUMBER	20



INDYCAR

BEST PRACTICE INDYCAR

CODE	B.28.0163
DRIVE	Paoli Spline
MATERIAL	Grade 5 titanium
RETENTION SYSTEM	ghost magnets and o-ring
TEETH NUMBER	20



INDY NXT

BEST PRACTICE INDY NXT

CODE	B.28.0034
DRIVE	1"
MATERIAL	300M steel
RETENTION SYSTEM	spring retainers



SUPER FORMULA

BEST PRACTICE SUPER FORMULA

CODE	B.28.0152
DRIVE	Paoli Spline
MATERIAL	300M steel
RETENTION SYSTEM	circlip

ORECA

GHOST MAGNETS SOCKET



ORECA 07

BEST PRACTICE LMP2

CODE	B.28.0164
DRIVE	Paoli Spline
MATERIAL	Grade 5 titanium
RETENTION SYSTEM	ghost magnets
TEETH NUMBER	10



ON DEMAND

FERRARI



F488/F296

BEST PRACTICE GT3 SERIES

CODE	B.28.0058
DRIVE	1"
MATERIAL	Grade 5 titanium
RETENTION SYSTEM	-
TEETH NUMBER	24



F488/F296 & FERRARI 599XX

BEST PRACTICE F488/F296 & FERRARI 599XX

CODE	B.28.0151
DRIVE	Paoli Spline
MATERIAL	300M steel
RETENTION SYSTEM	circlip
TEETH NUMBER	20

LAMBORGHINI - AUDI

MERCEDES



LAMBORGHINI HURACAN/TEMERARIO/AUDI R8

BEST PRACTICE GT3 SERIES

CODE	B.28.0095
DRIVE	1"
MATERIAL	300M steel
RETENTION SYSTEM	magnets
TEETH NUMBER	10



MERCEDES AMG GT3

BEST PRACTICE GT3 SERIES

CODE	B.28.0119
DRIVE	1"
MATERIAL	7075 aluminium alloy
RETENTION SYSTEM	-
TEETH NUMBER	24



ASTON MARTIN



ASTON MARTIN

BEST PRACTICE GT3 SERIES

CODE B.28.0144

DRIVE Paoli Spline

MATERIAL Grade 5 titanium

RETENTION SYSTEM -

TEETH NUMBER 22

SPLINE SOCKETS SERVICE KIT



CODE: B.23.0222

The kit includes:

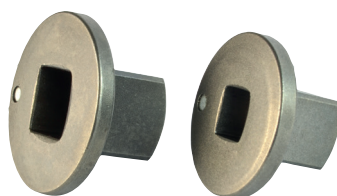
- 1 adjustable hook wrench with round pin
- 3 disc springs
- 3 self-locking washers
- 1 axial retaining screw

CODE: B.23.0243

The kit includes:

- 3 disc springs
- 3 self-locking washers
- 1 axial retaining screw

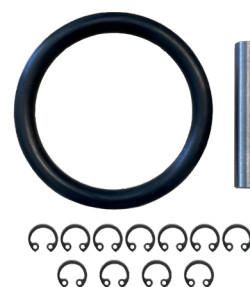
INSERT ADAPTERS



Recommended just for garage use.
With this compact insert adapter to a bigger square drive the overall length is reduced to an absolute minimum.
The insert adapter sticks to the socket by means of a magnet.

CODE	WHEEL GUN	SOCKETS
B.29.0001	1/2"	3/4"
B.29.0002	3/4"	1"

SOCKET RINGS, RETAINERS & SEEGER



WARNING!

Always ensure the correct installation of the retainer to avoid the risks of working with a loose socket!

CODE	DESCRIPTION
B.30.02.0004	Rings
B.30.01.0014	Retainers
D.09.08.0043	Seeger

