



# PAOLI SOCKETS

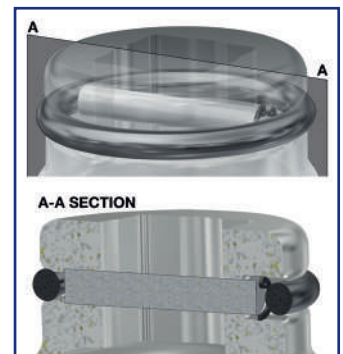
The new Paoli sockets are an unprecedented product and the result of a long and complex engineering research. Continued consultation with many race customers has ensured that the Paoli Sockets' technological development goes hand in hand with the real needs of racing teams in terms of versatility, safety, materials and maintenance.

- Three different materials: titanium, special steel and aeronautical aluminium. The first and the second are suitable for the race application, the third one is suitable for non-intensive use and torque wrench.
- Innovative design, attractive shapes and aesthetically pleasing.
- Accuracy in fitting the socket to the square drive, perfect clearance that allows the socket to be assembled and disassembled just by hand.
- Innovative safety system to insert the pin through the socket/square drive hole. Revolutionary system when assembling the socket by using the circlip and an 'O' ring on the cover. Maximum safety, a fine fitting and a considerably reduced assembly time.
- Insertion of service holes for maintenance of magnets: replacing magnets is quick and easy, with a simple plug-locator.
- Internal 'O' ring retaining nut made from new Paoli Sockets material. The customized resin gives the socket an ideal grip with its high gripping power.
- The Paoli Sockets Service Kit for the maintenance and replacement of worn parts contains everything needed to work on the socket simply and safely. A brief instruction manual indicates the optimum way to carry out operations (E.g. replacement and subsequent refinement of magnets).

Internal 'O' ring retaining nut especially made for Paoli Sockets.

Also available in aeronautical aluminium, suitable for torque wrench applications.

Innovative safety system.



Replacing magnets is quick and easy thanks to rear service holes.

Accuracy in fitting the socket to the wrench (minimal clearance).

Innovative design, attractive shapes and aesthetically pleasing.



**USER  
MANUAL**

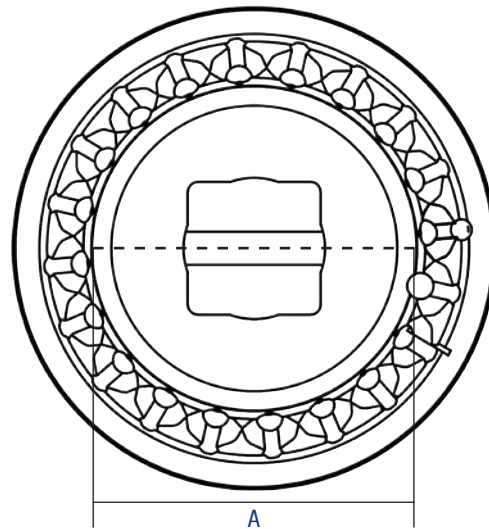


WWW.PAOLI.NET | SALES@PAOLI.NET | +39.0522.364511



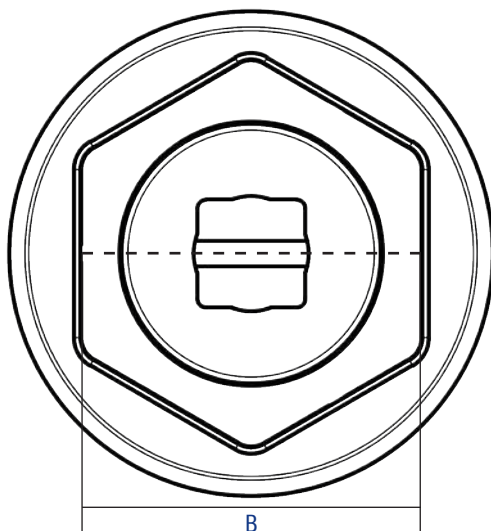
## CHOOSE YOUR PAOLI SOCKET

### SOCKETS "WITH FINGERS"



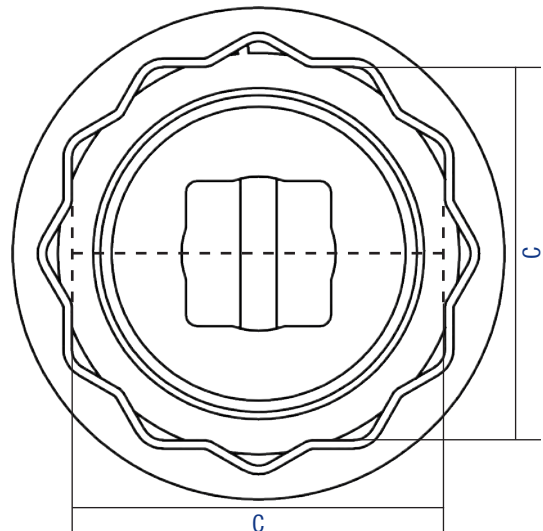
CODE	PAGE	CODE	PAGE	CODE	PAGE
B.28.0090	73	B.28.0042	76	B.28.0041	80
B.28.0082	73	B.28.0081	79	B.28.0083	81
B.28.0051	73	B.28.0050	79	B.28.0063	81
B.28.0058	73	B.28.0080	80	B.28.0052	82
B.28.0032	76	B.28.0033	80	B.28.0059	82

### HEXAGONAL SOCKETS



CODE	PAGE
B.28.0037	76
B.28.0064	78

### DODECAGONAL SOCKETS



CODE	PAGE	CODE	PAGE
B.28.0091	77	B.28.0035	83
B.28.0061	77	B.28.0062	83
B.28.0034	83	B.28.0053	84

## SOCKET CONFIGURATOR

BEST PRACTICE	CODE	DRIVE	MATERIAL	PAGE
F488	B.28.0082	Spline	Titanium	75
	B.28.0090	Spline	Titanium	75
	B.28.0058	Square 1"	Titanium	75
	B.28.0051	Square 1"	Alluminium	75
F458 GT3	B.28.0032	Square 1"	Titanium	76
	B.28.0042	Square 1"	Alluminium	76
F430 CHALLENGE	B.28.0037	Square 1"	Alluminium	76
FORMULA 2	B.28.0061	Square 1"	Titanium	77
	B.28.0091	Spline	Titanium	77
HURACAN SUPER TROFEO	B.28.0064	Square 1"	Alluminium	78
HURACAN GT3	B.28.0081	Spline	Steel	79
	B.28.0050	Square 1"	Steel	79

INDYCAR	B.28.0080	Spline	Titanium	80
	B.28.0033	Square 1"	Titanium	80
	B.28.0041	Square 1"	Alluminium	80
PORSCHE 991 RSR	B.28.0083	Spline	Titanium	81
	B.28.0063	Square 1"	Titanium	81
PORSCHE 991 CUP	B.28.0052	Square 1"	Alluminium	82
MERCEDES SL3	B.28.0059	Square 1"	Steel	82
SUPER FORMULA	B.28.0062	Square 1"	Steel	83
GP3 WSR F3	B.28.0034	Square 1"	Steel	83
	B.28.0035	Square 3/4"	Steel	83
LMP3	B.28.0053	Square 1"	Steel	84

## BEST PRACTICE → FERRARI ENDURANCE



**NEW PAOLI SOCKET!**  
ORIGINAL PAOLI DESIGN  
FOR SPLINE WHEEL GUNS.  
CUTTING EDGE ANVIL-SOCKET  
PAOLI FIXING SYSTEM! (Page 15)



B.28.0090

B.28.0082

### F488

CODE	B.28.0090	B.28.0082
DRIVE	Paoli Spline	Paoli Spline
MATERIAL	titanium	titanium
A	59 mm	59 mm
RETENTION SYSTEM	front fixing screw	front fixing screw
TEETH NUMBER	12	24



B.28.0051

B.28.0058

### F488

CODE	B.28.0051	B.28.0058
SQUARE DRIVE	1"	1"
MATERIAL	steel	titanium
A	59 mm	59 mm
RETENTION SYSTEM	n.a.	n.a.
TEETH NUMBER	12	24



## BEST PRACTICE → FERRARI ENDURANCE



**SAFER ENGINEERING:**  
THE MAGNETS ARE MOUNTED  
FROM THE BACK!



B.28.0042 **ALUMINIUM SOCKET:**  
ONLY FOR TORQUE  
WRENCH APPLICATION

B.28.0032

### F458 GT3 (14 slots nut)

CODE	B.28.0032	B.28.0042
SQUARE DRIVE	1"	1"
MATERIAL	titanium	aluminium
A	69,18 mm	69,18 mm
RETENTION SYSTEM	magnets and o-ring	magnets and o-ring
TEETH NUMBER	28	28

## BEST PRACTICE → FERRARI CHALLENGE



**ALUMINIUM SOCKET:**  
ONLY FOR TORQUE  
WRENCH APPLICATION

### FERRARI 430 CHALLENGE

CODE	B.28.0037
SQUARE DRIVE	1"
MATERIAL	aluminium
B	80 mm
RETENTION SYSTEM	balls and springs

## BEST PRACTICE → FORMULA 2



**NEW PAOLI SOCKET!**  
ORIGINAL PAOLI DESIGN  
FOR SPLINE WHEEL GUNS.  
CUTTING EDGE ANVIL-SOCKET  
PAOLI FIXING SYSTEM! (Page 15)



### FORMULA 2

CODE	B.28.0091
DRIVE	Paoli Spline
MATERIAL	titanium
C	65 mm
RETENTION SYSTEM	front fixing screw



### FORMULA 2

CODE	B.28.0061
DRIVE	1"
MATERIAL	titanium
C	65 mm
RETENTION SYSTEM	harmonic ring



## BEST PRACTICE → LAMBORGHINI SUPER TROFEO



**ALUMINIUM SOCKET:**  
ONLY FOR TORQUE  
WRENCH APPLICATION

### HURACAN SUPER TROFEO

CODE	B.28.0064
SQUARE DRIVE	1"
MATERIAL	aluminium
B	70 mm
RETENTION SYSTEM	magnets

## BEST PRACTICE → LAMBORGHINI ENDURANCE



**NEW PAOLI SOCKET!**  
ORIGINAL PAOLI DESIGN  
FOR SPLINE WHEEL GUNS.  
CUTTING EDGE ANVIL-SOCKET  
PAOLI FIXING SYSTEM! (Page 15)



**SAFER ENGINEERING:**  
THE MAGNETS ARE MOUNTED  
FROM THE BACK!



### HURACAN GT3

CODE	B.28.0081
DRIVE	Paoli Spline
MATERIAL	steel
A	49,5 mm
RETENTION SYSTEM	front fixing screw
TEETH NUMBER	20



### HURACAN GT3

CODE	B.28.0059	B.28.0050
SQUARE DRIVE	1"	1"
MATERIAL	steel	steel
A	49,5 mm	49,5 mm
RETENTION SYSTEM	magnets	magnets
TEETH NUMBER	10	20



## BEST PRACTICE → INDYCAR



**NEW PAOLI SOCKET!**  
ORIGINAL PAOLI DESIGN  
FOR SPLINE WHEEL GUNS.  
CUTTING EDGE ANVIL-SOCKET  
PAOLI FIXING SYSTEM! (Page 15)



**SAFER ENGINEERING:**  
THE MAGNETS ARE MOUNTED  
FROM THE BACK!



B.28.0033

B.28.0041

**ALUMINIUM SOCKET:**  
ONLY FOR TORQUE  
WRENCH APPLICATION

### INDYCAR

CODE	B.28.0080
DRIVE	Paoli Spline
MATERIAL	titanium
A	65,26 mm
RETENTION SYSTEM	front fixing screw
TEETH NUMBER	20

### INDYCAR

CODE	B.28.0033	B.28.0041
SQUARE DRIVE	1"	1"
MATERIAL	titanium	aluminium
A	65,26 mm	65,26 mm
RETENTION SYSTEM	magnets and o-ring	magnets and o-ring
TEETH NUMBER	20	20

## BEST PRACTICE → PORSCHE CUP, ENDURANCE



**NEW PAOLI SOCKET!**  
ORIGINAL PAOLI DESIGN  
FOR SPLINE WHEEL GUNS.  
CUTTING EDGE ANVIL-SOCKET  
PAOLI FIXING SYSTEM! (Page 15)



**RADIAL GRUB:**  
REDUCES THE GAP  
BETWEEN SOCKET  
AND SQUARE DRIVE



### PORSCHE 991 RSR

CODE	B.28.0083
DRIVE	Paoli Spline
MATERIAL	titanium
A	58,5 mm
RETENTION SYSTEM	front fixing screw
TEETH NUMBER	18

### PORSCHE 991 RSR

CODE	B.28.0063
SQUARE DRIVE	1" long
MATERIAL	titanium
A	58,5 mm
RETENTION SYSTEM	magnets
TEETH NUMBER	18

## BEST PRACTICE → PORSCHE CUP, ENDURANCE



**ALUMINIUM SOCKET:**  
ONLY FOR TORQUE  
WRENCH APPLICATION

### PORSCHE 991 CUP

CODE	B.28.0052
SQUARE DRIVE	1"
MATERIAL	aluminium
A	65 mm
RETENTION SYSTEM	o-ring
TEETH NUMBER	15

Available on demand

## BEST PRACTICE → MERCEDES SL3



### MERCEDES SL3

CODE	B.28.0059
SQUARE DRIVE	1"
MATERIAL	steel
A	61 mm
RETENTION SYSTEM	pin, circlip and o-ring
TEETH NUMBER	24

## BEST PRACTICE → GP3 WSR F3



B.28.0035

B.28.0034

### GP3 WSR F3

CODE	B.28.0034	B.28.0035
SQUARE DRIVE	1"	3/4"
MATERIAL	steel	steel
C	55 mm	55 mm
RETENTION SYSTEM	balls and springs	balls and springs

## BEST PRACTICE → SUPER FORMULA



### SUPER FORMULA

CODE	B.28.0062
SQUARE DRIVE	1"
MATERIAL	steel
C	65 mm
RETENTION SYSTEM	harmonic ring

## BEST PRACTICE → LMP3



### LMP3

CODE	B.28.0053
SQUARE DRIVE	1"
MATERIAL	steel
C	60 mm
RETENTION SYSTEM	magnets

## PAOLI WHEEL NUTS



### COMPATIBLE WITH F488

CODE	VERSION	DESCRIPTION
B.32.0018	LH - aerospace steel	with slots
B.32.0019	RH - aerospace steel	with slots

On demand we are able to produce and supply more wheel nuts for different specific needs.

## SPLINE SOCKETS SERVICE KIT

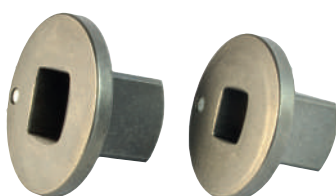


CODE: B.23.0221  
Spline anvil-socket connection kit.

The kit includes:

- 1 adjustable hook wrench with round pin
- 3 disc springs
- 3 self-locking washers
- 1 axial retaining screw

## INSERT ADAPTERS



Recommended just for garage use.  
With this compact insert adapter to a bigger square drive the overall length is reduced to an absolute minimum.  
The insert adapter sticks to the socket by means of a magnet.

CODE	WHEEL GUN	SOCKETS
B.29.0001	1/2"	3/4"
B.29.0002	3/4"	1"

## SOCKET RINGS & RETAINERS



### WARNING!

The socket without the retainer can be dangerous if it gets out during the work!

FOR SOCKETS	PAGE	RETAINERS	RINGS
B.28.0063	81		
B.28.0052	82	B.30.01.0014	B.30.02.0004
B.28.0033 B.28.0041	80		
B.28.0037	76	B.30.01.0009	B.30.02.0005
B.28.0051 B.28.0058	75		
B.28.0032 B.28.0042	76		
B.28.0064	78	B.30.01.0014	B.30.02.0004
B.28.0050	79		
B.28.0059	82		
B.28.0062	83	B.30.01.0014	B.30.02.0008
B.28.0061	77	B.30.01.0014	B.30.02.0004
B.28.0034	83	B.30.01.0014	B.30.02.0008
B.28.0035	83	B.30.01.0001	B.30.02.0003

