

PAOLI REGULATORS

Main features: Paoli regulators have all been conceived to first guarantee the correct (very high) air flow to all the models of Paoli guns. Furthermore, all the Paoli regulators minimize the pressure drop from static to dynamic. We do deliver mostly piston regulators for high pressure and diaphragm regulators for lower pressures.

- All of our regs are entirely made of brass
- We can deliver different kind of gauges (standard, filled w/Vaseline to stabilize the needle, w/double main scale psi/bar)
- We do always recommend to match a high pressure oiler to each regulator and to ship them back regularly to us or to an authorized service centre for a complete overhaul.



GAUGES AVAILABLE
WITH BOTH MAIN
SCALES (BAR/PSI)

SAFETY VALVE ADJUSTED AT 50 BAR

F5 FEATURES

HIGH FLOW FILTER EASY
TO REPLACE

IMMEDIATELY REPLACEABLE
TO THE OLD F4 MODEL

PISTON INSIDE

AIR PRESSURE AND
VOLUME BALANCER
DEVICE

BODY MADE OF BRASS

The 'Paoli F5' pressure regulator is one of the best models available. It can immediately replace the old F4 model without the need for modifications. In addition, the fixing nut is already included.

- It grants constant air flow also at high pressures.
- It keeps high performances also when the air bottle is almost empty.
- It gives very high air flow

MANUAL



Operating and
Maintenance
Manual



WWW.PAOLI.NET | SALES@PAOLI.NET | +39.0522.364511

MODEL F1 / MODEL F2



PISTON MECHANISM



TWO MODELS IN 1!

F1 can be converted into the F2 model with just one overpressure valve adjustment and replacement of spring, plate and pressure gauge

CODE	B.40.0001	B.40.0034	B.40.0040
INLET PRESSURE	220 bar	220 bar	350 bar
MAX FLOW (20 BAR/OUT)	150 Nm ³ /h	150 Nm ³ /h	200 Nm ³ /h
GAUGES IN	0-450 bar	0-6500 PSI	0-450 bar
GAUGES OUT	0-60 bar	0-870 PSI	0-60 bar
OVER PRESSURE VALVE SETTING	30 bar	30 bar	30 bar
THREAD IN	1/4" BSP	1/4" BSP	1/4" BSP
THREAD OUT	3/8" BSP	3/8" BSP	3/8" BSP
FLOW	medium	medium	medium
AIRJACK			
HIGH FLOW FILTER			
BALANCED			

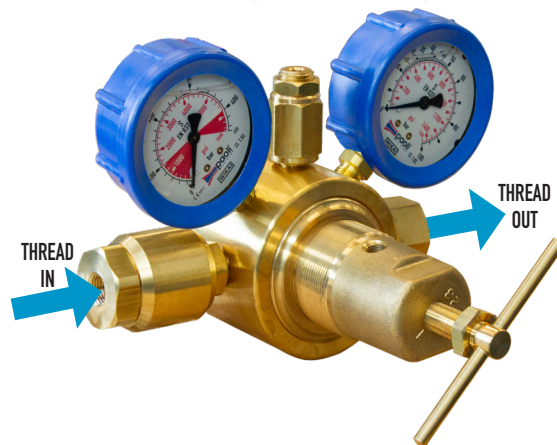
CODE	B.40.0002	B.40.0035	B.40.0041
INLET PRESSURE	220 bar	220 bar	350 bar
MAX FLOW (20 BAR/OUT)	150 Nm ³ /h	150 Nm ³ /h	200 Nm ³ /h
GAUGES IN	0-450 bar	0-6500 PSI	0-450 bar
GAUGES OUT	0-100 bar	0-870 PSI	0-100 bar
OVER PRESSURE VALVE SETTING	50 bar	50 bar	50 bar
THREAD IN	1/4" BSP	1/4" BSP	1/4" BSP
THREAD OUT	3/8" BSP	3/8" BSP	3/8" BSP
FLOW	medium	medium	medium
AIRJACK	•	•	
HIGH FLOW FILTER			
BALANCED			

MODEL F4



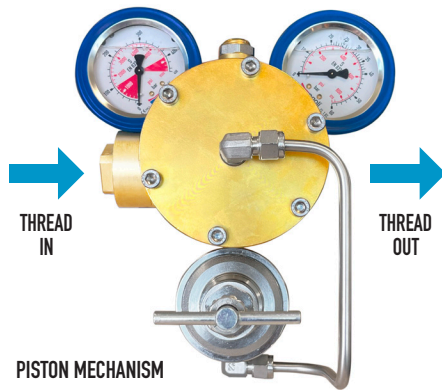
CODE	B.40.0042
INLET PRESSURE	350 bar
MAX FLOW (20 BAR/OUT)	500 Nm ³ /h
GAUGES IN	0-450 bar
GAUGES OUT	0-100 bar
OVER PRESSURE VALVE SETTING	50 bar
THREAD IN	1/4" BSP
THREAD OUT	3/8" BSP
FLOW	high
AIRJACK	•
HIGH FLOW FILTER	•
BALANCED	•

MODEL F5



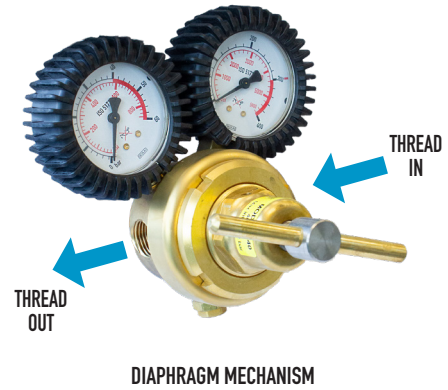
CODE	B.40.0103	B.40.0112 MAIN SCALE psi
INLET PRESSURE	350 bar	350 bar
MAX FLOW (20 BAR/OUT)	500 Nm ³ /h	500 Nm ³ /h
GAUGES IN	0-450 bar	0-300 bar
GAUGES OUT	0-100 bar	0-50 bar
OVER PRESSURE VALVE SETTING	50 bar	50 bar
THREAD IN	1/4" BSP	1/4" BSP
THREAD OUT	3/8" BSP	3/8" BSP
FLOW	high	high
AIRJACK	•	•
HIGH FLOW FILTER	•	•
BALANCED	•	•

MODEL F9 2.0



CODE	B.40.0104	B.40.0105	B.40.0106
INLET PRESSURE	220 bar	220 bar	350 bar
MAX FLOW (20 BAR/OUT)	400 Nm ³ /h	400 Nm ³ /h	500 Nm ³ /h
GAUGES IN	0-450 bar	0-6500 PSI	0-450 bar
GAUGES OUT	0-60 bar	0-870 PSI	0-100 bar
OVER PRESSURE VALVE SETTING	40 bar	40 bar	40 bar
THREAD IN	1/4" BSP	1/4" BSP	1/4" BSP
THREAD OUT	3/8" BSP	3/8" BSP	3/8" BSP
FLOW	high	high	high
AIRJACK			
HIGH FLOW FILTER	•	•	•
BALANCED	•	•	•

MODEL F40



CODE	B.40.0049
INLET PRESSURE	300 bar
MAX FLOW (20 BAR/OUT)	700 Nm ³ /h
GAUGES IN	0-450 bar
GAUGES OUT	0-60 bar
OVER PRESSURE VALVE SETTING	40 bar
THREAD IN	1/4" BSP
THREAD OUT	1/2" BSPT
FLOW	high
AIRJACK	•
HIGH FLOW FILTER	
BALANCED	

AIR PRESSURE REGULATOR SERVICE FIXTURE



S.01.0161

The air pressure regulator service fixture sustains the regulator during its assembling and disassembling phases. It is compatible with the following Paoli air pressure regulator models: F1, F2, F4 and F9 2.0.

AIR PRESSURE REGULATOR TESTING BENCH

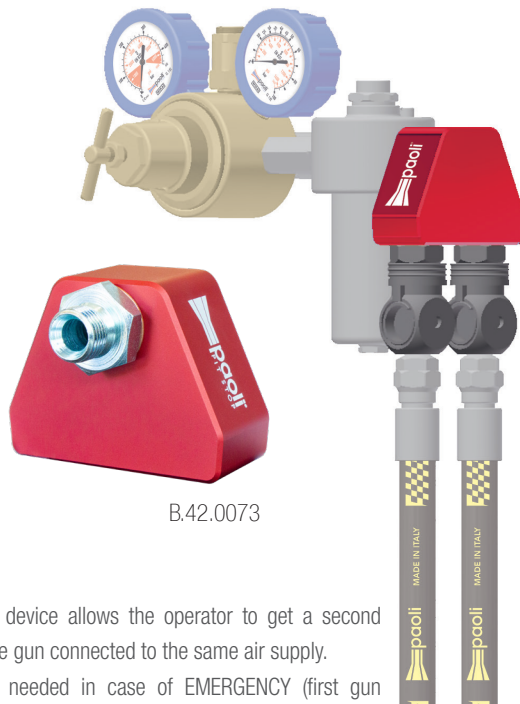


This kit has been designed to test the air pressure regulators. The air pressure regulator testing bench is composed by:

- 1 bench (350 x 130 x 80 mm)
- 1 hose
- 1 valve

DIN 200 Bar coupling for compressor available on demand (Code: B.21.0088)

SPARE GUN AIR SUPPLY DEVICE



B.42.0073

This device allows the operator to get a second spare gun connected to the same air supply. It is needed in case of EMERGENCY (first gun failing) during the pit stop operations.

WARNING: you should use just on gun at a time otherwise the air flow drops down very quickly.

Couplings not included.

FIXING NUTS



B.40.0007



B.40.0094

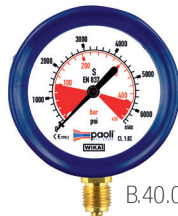
Fixing nuts for air pressure regulators
F1 - F2 - F4



ANALOGIC GAUGES



B.40.0071



B.40.0072



B.40.0073



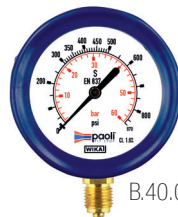
B.40.0116



B.40.0074



B.40.0075



B.40.0076



B.40.0117

CODE	DIAMETER	CONNECTION	RANGE		GLYCERIN	DISPLAY
B.40.0071	63 mm	1/4" BSP	0-450 bar	0-6500 PSI	X	analogic
B.40.0072	63 mm	1/4" BSP	0-450 bar	0-6500 PSI	X	analogic
B.40.0073	63 mm	1/4" BSP	0-60 bar	0-870 PSI	X	analogic
B.40.0074	63 mm	1/4" BSP	0-100 bar	0-1450 PSI	X	analogic
B.40.0075	63 mm	1/4" BSP	0-28 bar	0-400 PSI	X	analogic
B.40.0076	63 mm	1/4" BSP	0-60 bar	0-870 PSI	X	analogic
B.40.0116	63 mm	1/4" BSP	0-50 bar	0-700 PSI		analogic
B.40.0117	63 mm	1/4" BSP	0-300 bar	0-4200 PSI		analogic

ELECTRONIC PRESSURE SWITCH



Electronic pressure switch mountable on all Paoli pressure regulators.

The acoustic alarm, audible at a distance, alerts the user when the cylinder is emptying. This limits the risk of running out of air and reduces the possibility of compromising the wheel gun performance in case of semi-empty air bottles.

FEATURES

- Easily readable digital display
- Intuitive and fast setup
- Settable Pressure
- Easy and flexible mounting
- Acoustic alarm
- Power adapter included



CODE	B.40.0090
CONNECTION	1/4" BSP
RANGE	0-400 bar
VOLTAGE	9-36V DC (without the included power adapter); 110V-220V AC (using the included power adapter).
DECIBEL	100 dB
PIN CONNECTION	Pin 1: 9-36V DC Pin 2: GND



DIGITAL GAUGES



PROTECTIVE COVER INCLUDED

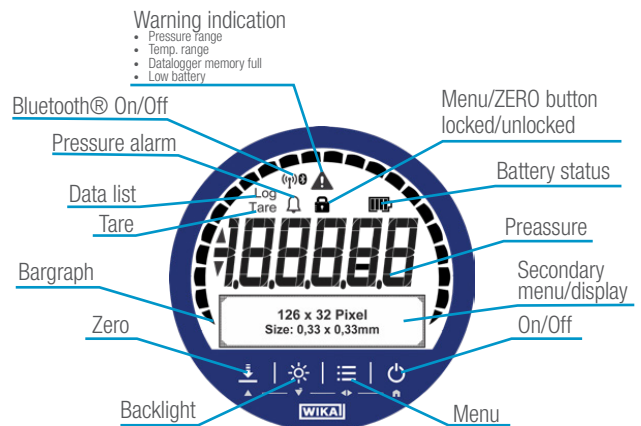
BACKLIGHTING:

the display can be easily read, even under poor lighting conditions.

USB and Bluetooth® Interface

This pressure gauge integrates a Micro-USB interface for simple data transmission with high interference resistance and can be equipped with a Bluetooth® interface for wireless communication.

PRECISE AND QUICK READING OF THE DISPLAY



- Suitable for mobile applications, robust and extremely precise
- Pressure ranges up to -1 ... +1,000 bar [-14.5 ... +15,000 psi] (relative pressure) feature an accuracy of up to 0.25% FS.
- Datalogger with up to 1 million data points and Min/Max function; the quick and simple testing minimizes the risk of production interruptions.
- Thanks to the Ex version, it is also suitable for the most complex and hazardous applications such as Oil & Gas.
- The power-saving mode allows a battery life of up to 4,000 hours.

FEATURES

- Battery operation (3 x 1.5 V AA cell)
- Min/Max memory function
- Unit switching: bar, psi, MPa, kg/cm², mbar
- Protection rating: IP65
- Accuracy (IEC 61298-2): 0,5 % FS
0,25 % FS

CODE	DIAMETER	CONNECTION	RANGE	DISPLAY
On-Demand	87 mm	1/4" BSP	0-100 bar 0-1500 PSI	digital
On-Demand	80 mm	1/4" BSP	0-600 bar 0-8700 PSI	digital

HIGH FLOW FILTER



B.45.0005

FILTER CAPSULE
TO BE REPLACED REGULARLY



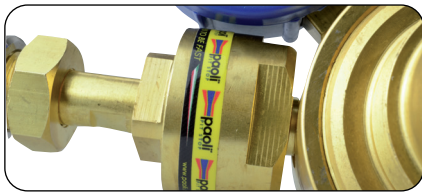
D.03.07.0078

HIGH FLOW FILTER FOR AIR PRESSURE REGULATOR KIT

Suitable for air pressure regulators for heavy duty application.
High surface area to grant bigger air flow.
Easy maintenance service.
Regularly replace the filter cartridge.

PRODUCT NAME	CODE	THREAD IN	THREAD OUT
High Flow Filter for F4	B.45.0005	1/4" BSP female	3/8" BSP male
High Flow Filter for F5	B.45.0020	3/8" Gas female	3/8" Gas male

PRODUCT NAME	CODE
Filter Capsule for F4	D.03.07.0078
Filter Capsule for F5	D.03.07.0211



HIGH PRESSURE OILER



Oil level indicator



MORE SPEED AND PERFORMANCE, INCREASED LIFESPAN OF YOUR PAOLI GUN

The oiler constantly lubricates the air motor getting the maximum speed and increasing its reliability.

CODE	B.45.0019
MAX OPERATING PRESSURE	60 bar
EFFECTIVE BOWL VOLUME	120 cm ³
SIZE	1/2" BSP
MOUNTING POSITION	Vertical
BOWL MATERIAL	Brass

ACCESSORIES

The following accessories are essential to assemble the oiler:



NIPPLE
Product Code B.42.0078



COUPLING
Product Code B.42.0049