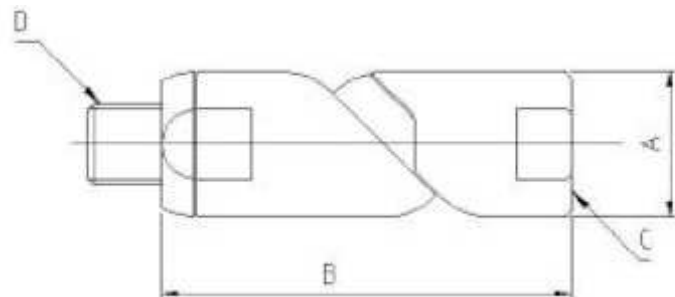


RACCORDO GIREVOLE  
RACCORD ORIENTABLE  
TURNING CONNECTOR



Raccomandato per: utensili pneumatici.

Utilisation recommandée: outils pneumatiques.

Recommended use: pneumatic tools.

Codice Référence Reference	<b>DV7MFG14</b>	<b>DV11MFG38</b>	<b>DV11MFG12</b>	<b>DV16MFG34</b>	<b>DV16MFG1</b>
Codice DP Référence DP Reference DP	<b>D.09.17.0088</b>	<b>D.09.17.0028</b>	<b>D.09.17.0089</b>	<b>D.09.17.0090</b>	<b>D.09.17.0091</b>
Interno Passage Internal	∅ 7 mm	∅ 11 mm	∅ 11 mm	∅ 16 mm	∅ 16 mm
A	24,0 mm	29,5 mm	29,5 mm	46,0 mm	46,0 mm
B	67,0 mm	82,0 mm	82,0 mm	98,0 mm	98,0 mm
C	Filetto interno G 1/4" Taraudage G 1/4" Internal thread Gas 1/4"	Filetto interno G 3/8" Taraudage G 3/8" Internal thread Gas 3/8"	Filetto interno G 1/2" Taraudage G 1/2" Internal thread Gas 1/2"	Filetto interno G 3/4" Taraudage G 3/4" Internal thread Gas 3/4"	Filetto interno G 1" Taraudage G 1" Internal thread Gas 1"
D	Filetto G 1/4" Filetage G 1/4" Thread Gas 1/4"	Filetto G 3/8" Filetage G 3/8" Thread Gas 3/8"	Filetto G 1/2" Filetage G 1/2" Thread Gas 1/2"	Filetto G 3/4" Filetage G 3/4" Thread Gas 3/4"	Filetto G 1" Filetage G 1" Thread Gas 1"