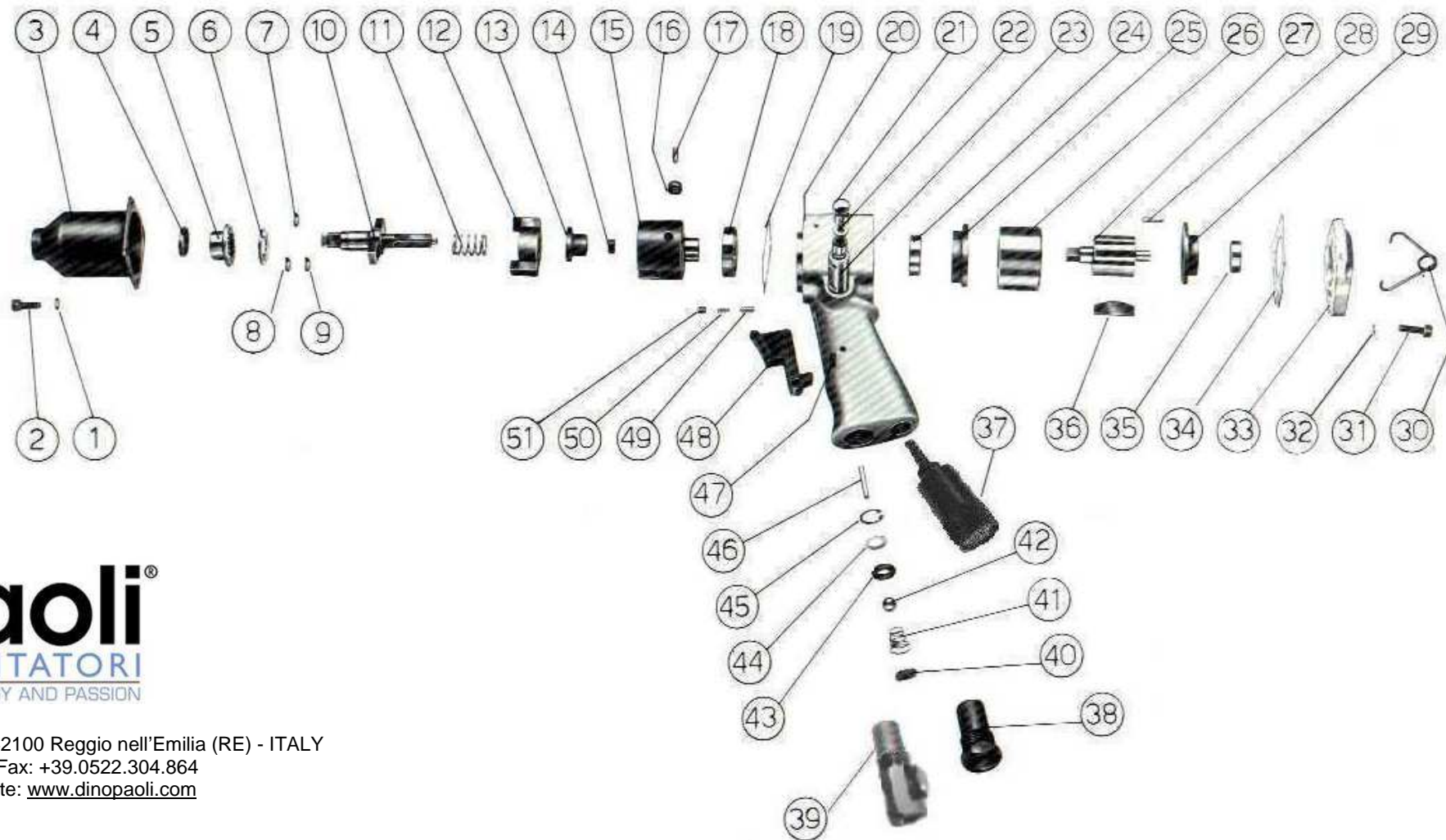


DP 93 SS



Dino Paoli s.r.l. - Via G. Dorso, 5 - 42100 Reggio nell'Emilia (RE) - ITALY
 Tel.: +39.0522.364.511 / 300.828 - Fax: +39.0522.304.864
 E-mail: info@dinopaoli.com - Website: www.dinopaoli.com

- | | | | | | | | |
|----|--------------------------------------|----|--------------------------------|----|----------------------------------|----|------------------------------------------|
| 1 | Hammer Case Lock Washer | 16 | Roller | 31 | Housing Cover Screw | 46 | Valve Pin |
| 2 | Hammer case Cap Screw | 17 | Pin Roller | 32 | Housing Cover Lock Washer | 47 | Trigger Pin |
| 3 | Hammer Case | 18 | Clutch Housing Bearing | 33 | Housing Cover | 48 | Trigger |
| 4 | Hammer Case Oil Seal | 19 | Hammer Case Gasket | 34 | Housing Cover Gasket | 49 | Rotation Reverser Pin |
| 5 | Combined Bearing | 20 | Motor Housing | 35 | Rear Rotor Bearing | 50 | Rotation Reverser Spring |
| 6 | Thrust Plate | 21 | Rotation Reverse Shaft Seal | 36 | Vane | 51 | Rotation Reverser Grub Screw |
| 7 | ½" Socket Retainer (alternative 8;9) | 22 | Rotation Reverse Shaft | 37 | Special Silencer | A | Whole Motor Housing (20+23;38;40+51) |
| 8 | ½" Socket Retaining Ring | 23 | Rotation Reverse Shaft Bushing | 38 | Air Inlet Reducer | B | Whole Motor Housing + Reg. (20+23;39+51) |
| 9 | ½" Socket Retainer O-ring | 24 | Front Rotor Bearing | 39 | Air Inlet Reducer with Regulator | C | Whole Hammer Case (3;4;5) |
| 10 | Anvil Shank (½"sq. drive) | 25 | Front End Plate | 40 | Air Filter | D | Front End Plate + Bearing (24;25) |
| 11 | Clutch Spring | 26 | Cylinder | 41 | Valve Spring | E | Rear End Plate + Bearing (29;35) |
| 12 | Clutch Plate | 27 | Rotor | 42 | Stainless Ball | F | Air Inlet Valve (38;40+45) |
| 13 | Clutch Cam | 28 | Cylinder Dowel | 43 | Valve Seat | G | Air Inlet Valve + Regulator (39+45) |
| 14 | Clutch Housing Bushing | 29 | Rear End Plate | 44 | Valve Seat Support | H | Anvil Shank +Ring +O-ring (8;9;10) |
| 15 | Clutch Housing | 30 | Hanger | 45 | Anchor Pin Circlip | I | Anvil Shank +Ring (7;10) |