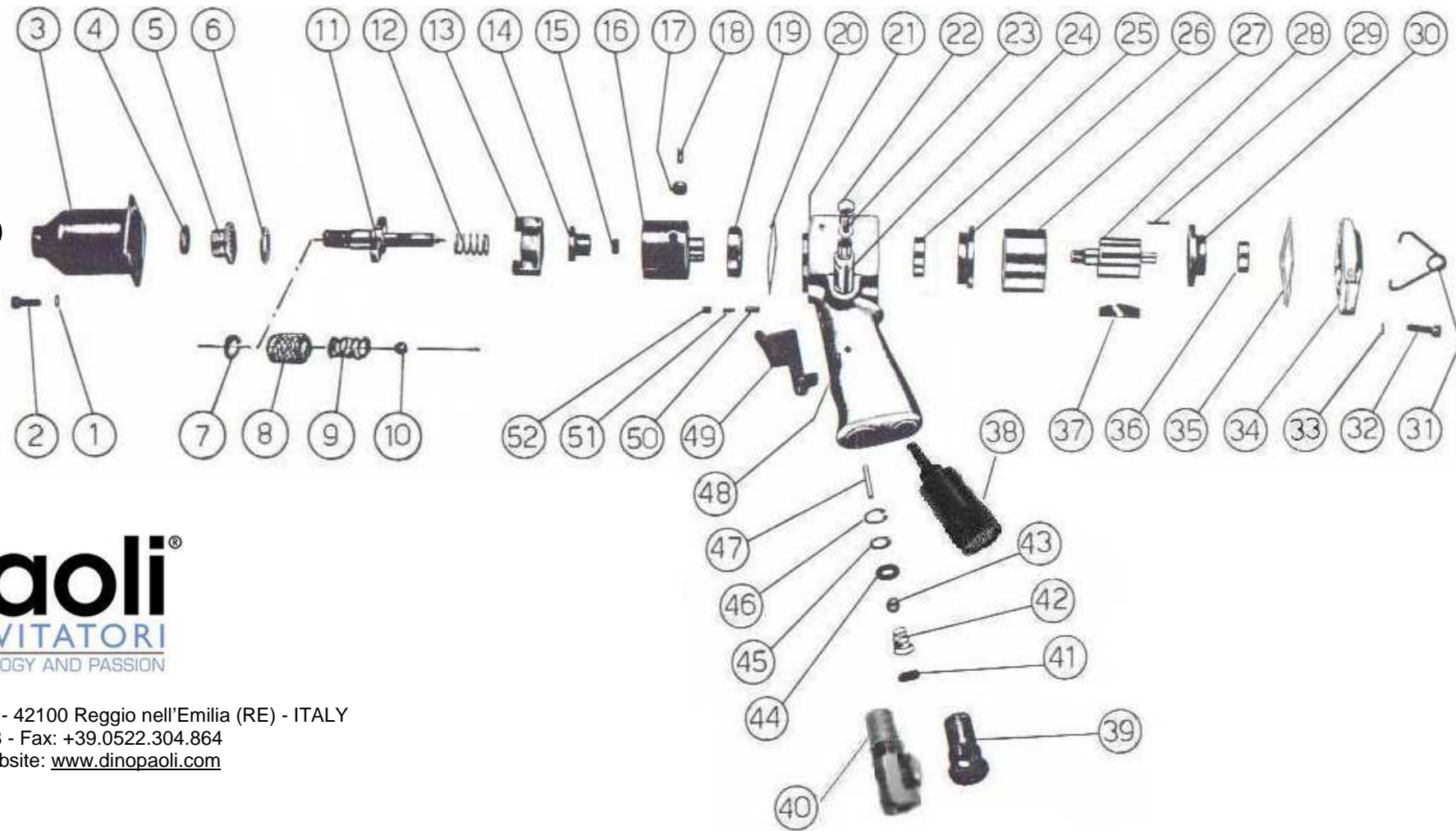


DP 92 XC SS



Dino Paoli s.r.l. - Via G. Dorso, 5 - 42100 Reggio nell'Emilia (RE) - ITALY
 Tel.: +39.0522.364.511 / 300.828 - Fax: +39.0522.304.864
 E-mail: info@dinopaoli.com - Website: www.dinopaoli.com

- | | | | |
|---------------------------|-----------------------------------|-------------------------------------|--|
| 1 Hammer Case Lock Washer | 16 Clutch Housing | 31 Hanger | 46 Anchor Pin Circlip |
| 2 Hammer Case Cap Screw | 17 Roller | 32 Housing Cover Screw | 47 Valve Pin |
| 3 Hammer Case | 18 Pin Roller | 33 Housing Cover Lock Washer | 48 Trigger Pin |
| 4 Hammer Case Oil Seal | 19 Clutch Housing Bearing | 34 Housing Cover | 49 Trigger |
| 5 Combined Bearing | 20 Hammer Case Gasket | 35 Housing Cover Gasket | 50 Rotation Reverser Pin |
| 6 Thrust Plate | 21 Motor Housing | 36 Rear Rotor Bearing | 51 Rotation Reverser Spring |
| 7 Retainer Ring | 22 Rotation Reverse Shaft Seal | 37 Vane | 52 Rotation Reverser Grub Screw |
| 8 Jacket | 23 Rotation Reverse Shaft | 38 Special Silencer | A Whole Motor Housing (21+24;39;41+52) |
| 9 Jacket Spring | 24 Rotation Reverse Shaft Bushing | 39 Air Inlet Reducer | B Whole Motor Housing + Reg. (21+24;40+52) |
| 10 Stainless Ball | 25 Front Rotor Bearing | 40 Air Inlet Reducer with Regulator | C Whole Hammer Case (3;4;5) |
| 11 Spindle | 26 Front End Plate | 41 Air Filter | D Front End Plate + Bearing (25;26) |
| 12 Clutch Spring | 27 Cylinder | 42 Valve Spring | E Rear End Plate + Bearing (30;36) |
| 13 Clutch Plate | 28 Rotor | 43 Stainless Ball | F Air Inlet Valve (39;41+46) |
| 14 Clutch Cam | 29 Cylinder Dowel | 44 Valve Seat | G Air Inlet Valve + Regulator (40+46) |
| 15 Clutch Housing Bushing | 30 Rear End Plate | 45 Valve Seat Support | H Tool Kit (7;8;9;10) |