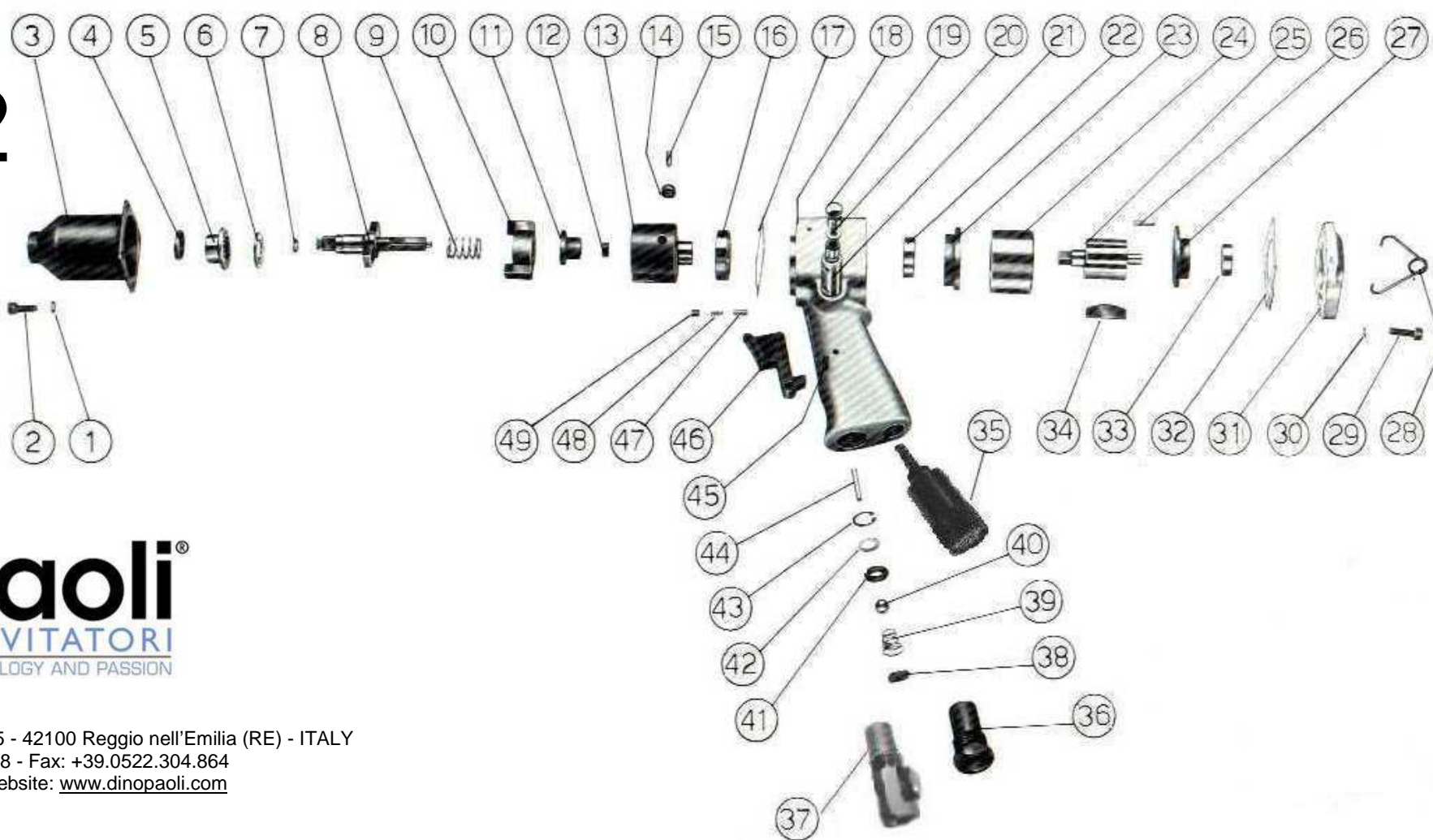


DP 92 SS



Dino Paoli s.r.l. - Via G. Dorso, 5 - 42100 Reggio nell'Emilia (RE) - ITALY
 Tel.: +39.0522.364.511 / 300.828 - Fax: +39.0522.304.864
 E-mail: info@dinopaoli.com - Website: www.dinopaoli.com

- | | | | |
|-----------------------------------|-----------------------------------|-------------------------------------|--|
| 1 Hammer Case Lock Washer | 16 Clutch Housing Bearing | 31 Housing Cover | 46 Trigger |
| 2 Hammer Case Cap Screw | 17 Hammer Case Gasket | 32 Housing Cover Gasket | 47 Rotation Reverser Pin |
| 3 Hammer Case | 18 Motor Housing | 33 Rear Rotor Bearing | 48 Rotation Reverser Spring |
| 4 Hammer Case Oil Seal | 19 Rotation Reverse Shaft Seal | 34 Vane | 49 Rotation Reverser Grub Screw |
| 5 Combined Bearing | 20 Rotation Reverse Shaft | 35 Special Silencer | A Whole Motor Housing (18+21;35;38+49) |
| 6 Thrust Plate | 21 Rotation Reverse Shaft Bushing | 36 Air Inlet Reducer | B Whole Motor Housing + Reg. (18+21;37+49) |
| 7 3/8" Socket Retainer | 22 Front Rotor Bearing | 37 Air Inlet Reducer with Regulator | C Whole Hammer Case (3;4;5) |
| 8 Anvil Shank (3/8" square drive) | 23 Front End Plate | 38 Air Filter | D Front End Plate + Bearing (22;23) |
| 9 Clutch Spring | 24 Cylinder | 39 Valve Spring | E Rear End Plate + Bearing (27;33) |
| 10 Clutch Plate | 25 Rotor | 40 Stainless Ball | F Air Inlet Valve (36;38+43) |
| 11 Clutch Cam | 26 Cylinder Dowel | 41 Valve Seat | G Air Inlet Valve + Regulator (37+43) |
| 12 Clutch Housing Bushing | 27 Rear End Plate | 42 Valve Seat Support | H Anvil Shank +Ring (7;8) |
| 13 Clutch Housing | 28 Hanger | 43 Anchor Pin Circlip | |
| 14 Roller | 29 Housing Cover Screw | 44 Valve Pin | |
| 15 Pin Roller | 30 Housing Cover Lock Washer | 45 Trigger Pin | |